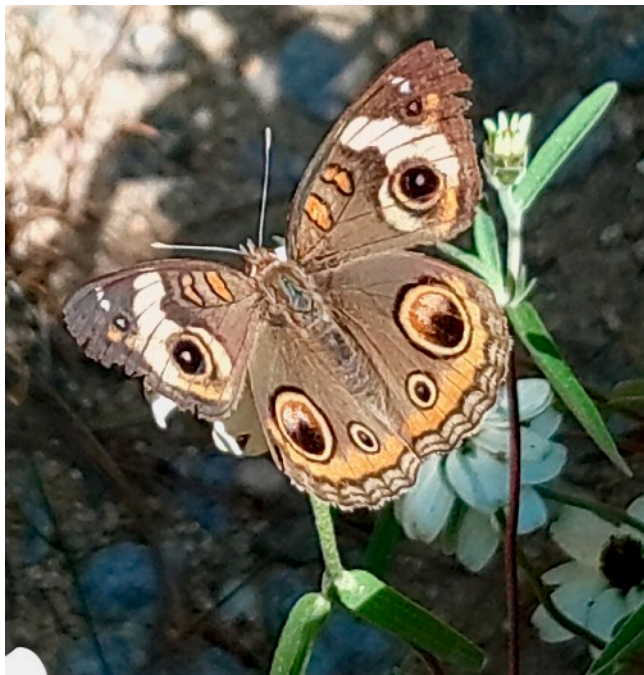




## Fall Update 2024



**Common Buckeye**

For me, Common Buckeyes are the harbingers of fall. Their orange, rust, and brown colors certainly fit the season, and they seem more abundant this time of year. After this summer's challenges, I've never been more eager for the equinox to arrive.

June brought triple-digit temperatures and only an inch of rain. July's torrential downpours created runoff, but didn't saturate the ground. Tropical Storm Debby delivered almost seven inches of rain the first week of August, then we waited three weeks before receiving another shower.

Gardening has never been more challenging than now in the era of climate change. It has also never been more important. The way we manage our property really can make a difference to the health of the surrounding environment.

On September 4, the Cary Environmental Symposium will begin five weeks of programs highlighting threats to our environment and efforts to overcome them. I look forward to hearing new ideas about what we can do to keep our planet livable.

How landscapes can help is the focus of Basil Camu's presentation. Basil will discuss his book *From Wasteland to Wonder: Easy Ways We Can Help Heal Earth in the Sub/Urban Landscape*.

(cont. next page)

## Upcoming Events

- Sept. 4 - Oct. 9  
Cary, NC [Cary Environmental Symposium](#)  
Five presentations focused on current ecological challenges and efforts to meet them. Coordinated by Trees for the Triangle and the Town of Cary
- September 13-15  
Raleigh, NC [Southern Ideal Home Show](#)  
Come see Dale at Triangle Gardener Magazine's "Ask the Experts Booth" on Saturday from noon to 4 p.m.
- September 14  
9:00 am-noon  
Raleigh, NC [Reid Garden Workday](#)  
[NC Native Plant Society](#)
- September 22  
3:00-6:00 pm  
Raleigh, NC [Swiftbrook Gardens Open Day](#)  
[Gardener by Nature Events](#)
- September 26  
1:00-3:00 pm  
Raleigh, NC [Creating a Habitat Garden](#)  
[Gardener by Nature Workshops](#)
- September 28  
9:00 am-1:00 pm  
Chapel Hill, NC [Fall Native Plant Sale](#)  
[North Carolina Botanical Garden](#)
- October 12  
9:00 am-noon  
Raleigh, NC [Reid Garden Workday](#)  
[NC Native Plant Society](#)
- November 9  
9:00 am-noon  
Raleigh, NC [Reid Garden Workday](#)  
[NC Native Plant Society](#)

For updates on future events visit my [website](#) or [Gardener by Nature's facebook page](#).



**Butterfly Pea**

One of the resilient self-seeding natives I write about in the upcoming issue of [Triangle Gardener Magazine](#)



**Eastern Tailed-Blue**

Entomologist Doug Tallamy, whose [Homegrown National Park](#) initiative promotes planting natives, will discuss oak trees and the incredible amount of biodiversity they support.

The upside of watching the garden suffer through drought and heat waves is seeing just how resilient many plants are, particularly our Southeastern natives. I decided to write about a few of my toughest stalwarts for the September issue of *Triangle Gardener*.

A number of my most drought-tolerant and heat-resistant native perennials are also self-seeders. They've helped populate some of the more difficult and deer-pressured spots in our garden.

In an area where nothing wanted to grow, Butterfly Pea (*Clitoria mariana*) formed a beautiful groundcover covered with cool blue flowers on the hottest days of summer. It's also a host plant for Eastern Tailed-Blue butterflies. Carolina Petunia (*Ruellia caroliniensis*), which occurs naturally on our property, is a host plant for my beloved Common Buckeyes.

Please share this newsletter and my [blog](#) with others who are interested in native plants. We'll welcome visitors for a stroll through the fall garden on our September 22 Open Day.

I offer consultations for those who want to create wildlife habitat in their own landscapes. Lastly, I'm excited to announce a new fall workshop, [Creating a Habitat Garden](#). Register at my website or use the form below.

*Happy Autumn,  
Dale*



### Creating a Habitat Garden

Learn the necessary components for creating a landscape that supports

insects, birds, and other wildlife while also meeting the needs of the human inhabitants.

Participants will see native plants in a garden setting and learn strategies for creating plantings that are sustainable and maintainable. Identifying and encouraging native plants in your garden or natural areas not only benefits wildlife, it also connects your garden to the surrounding natural community.

**Thursday, September 26  
1:00 - 3:00 p.m.**

*Registration Deadline: September 24*

#### Cost \$35

Workshop fees are payable by check. Make checks payable to: *Gardener by Nature LLC*. Fees are non-refundable after the **Registration Deadline**.

Mail the completed form with check to:  
**Gardener by Nature LLC  
5508 Swiftbrook Circle  
Raleigh, NC 27606**

## Fall 2024

### About Our Classes

Our workshops are designed for novice gardeners and those new to the Triangle; however, interested gardeners of all experience levels are welcome.

This workshop and other topics can be presented as special sessions for garden clubs or other interested groups of six or more.

Classes are conducted in Swiftbrook Gardens near Lake Wheeler and include hands-on activities. Participants should dress in comfortable attire that is appropriate for outdoor activities.

To learn more about us, please visit our website:

<http://gardenerbynature.com>

Email: [dale@gardenerbynature.com](mailto:dale@gardenerbynature.com)

Telephone: (919) 828-2015



**Helping humans  
create habitats to  
share**

Name: \_\_\_\_\_

Address: \_\_\_\_\_

Street \_\_\_\_\_

City \_\_\_\_\_

State/Zip \_\_\_\_\_

Phone: \_\_\_\_\_

Email: \_\_\_\_\_

Name of Class \_\_\_\_\_

Date/Time \_\_\_\_\_

Would you like to receive emails about future events?

Please circle your preference; YES NO

#### How to Register

Complete and submit the above registration form with payment. Registered students will be provided directions to Swiftbrook Gardens.

#### Fine Print (Please Read!)

Refunds are **not available after the Registration Deadline**. Students who are unable to attend due to last-minute emergencies may request a voucher for future classes.

Classes are held outdoors, so students should dress accordingly. In extreme weather, classes may be cancelled. Every effort will be made to contact students beforehand.

If a class is cancelled by Gardener by Nature, students may choose a refund or a make-up class.